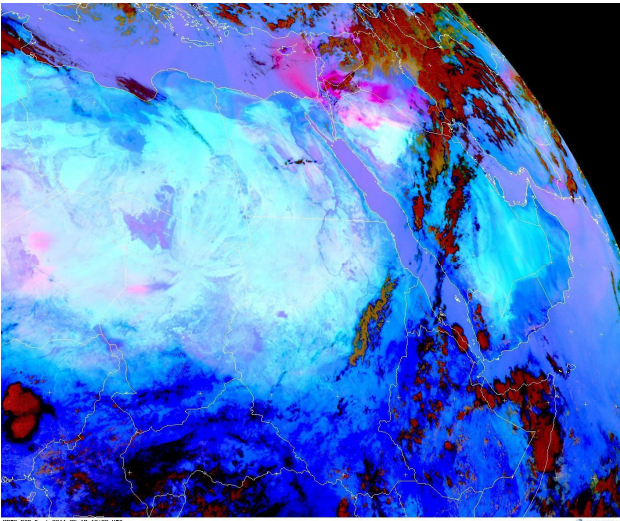
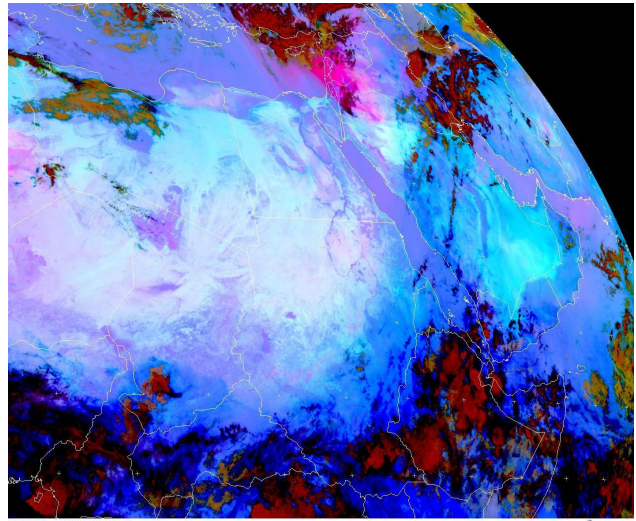


Dust event over Eastern Mediterranean and Middle East. 17-18 May 2011



NETD RGB-Dust 2011-05-17 12:00 UTC

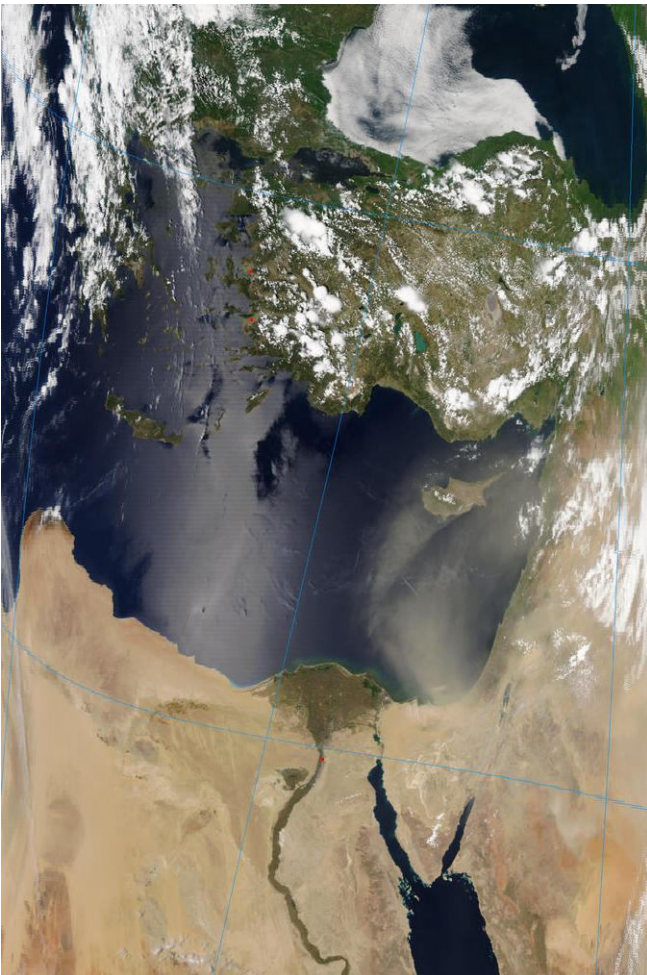
© EUMETSAT



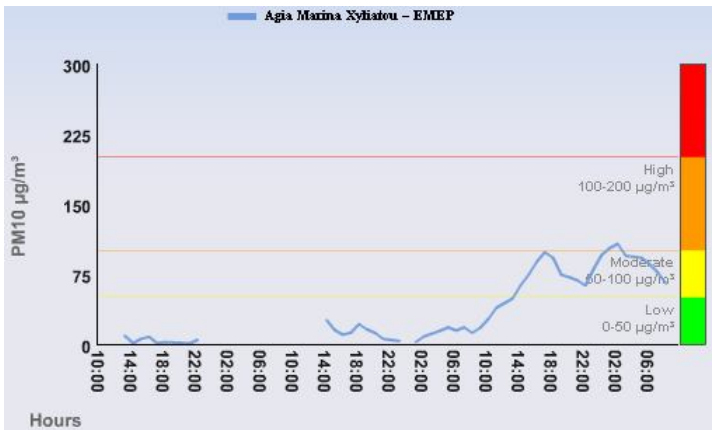
NETD RGB-Dust 2011-05-18 07:00 UTC

© EUMETSAT

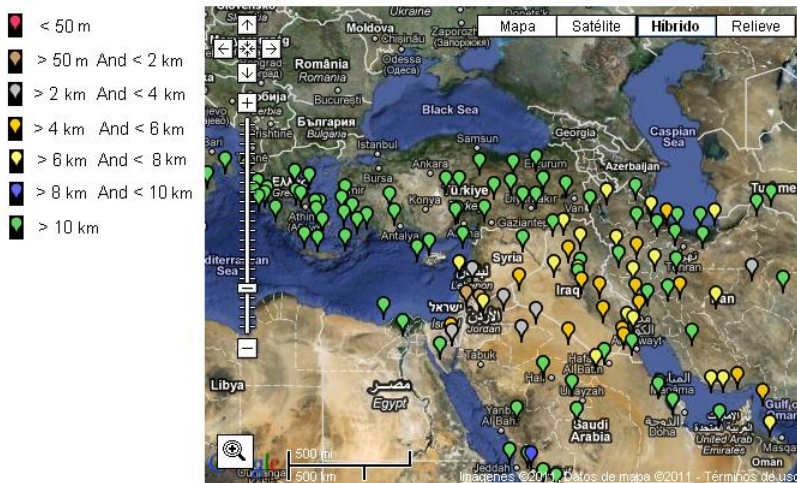
EUMETSAT dust RGB image, 17 May 2011 12:00 UTC (left), 18 May 2011 07:00 UTC (right)



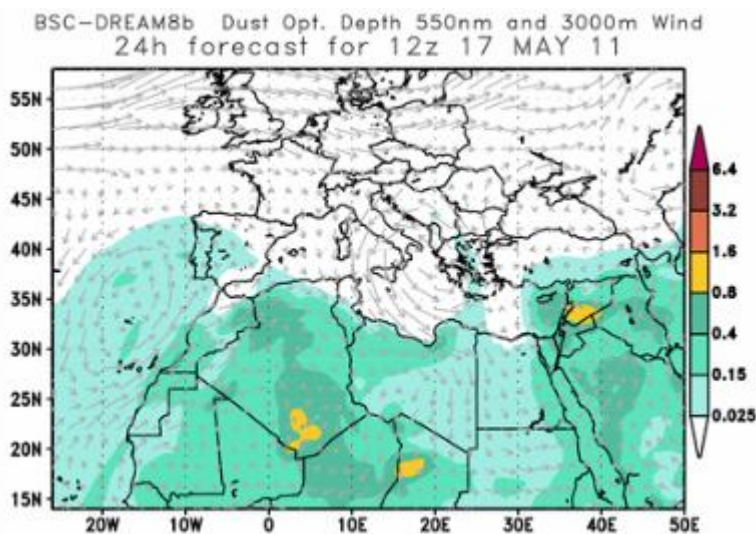
MODIS-Aqua image, 17 May 2011 11:10 UTC
(NASA – MODIS Rapid Response Team)



PM10 values 15 May 10:00 – 18 May 10:00 UTC
 Agia Marina EMEP station, Cyprus
 (Department of Labour Inspection –
 Ministry of Labour and Social Insurance – Cyprus).

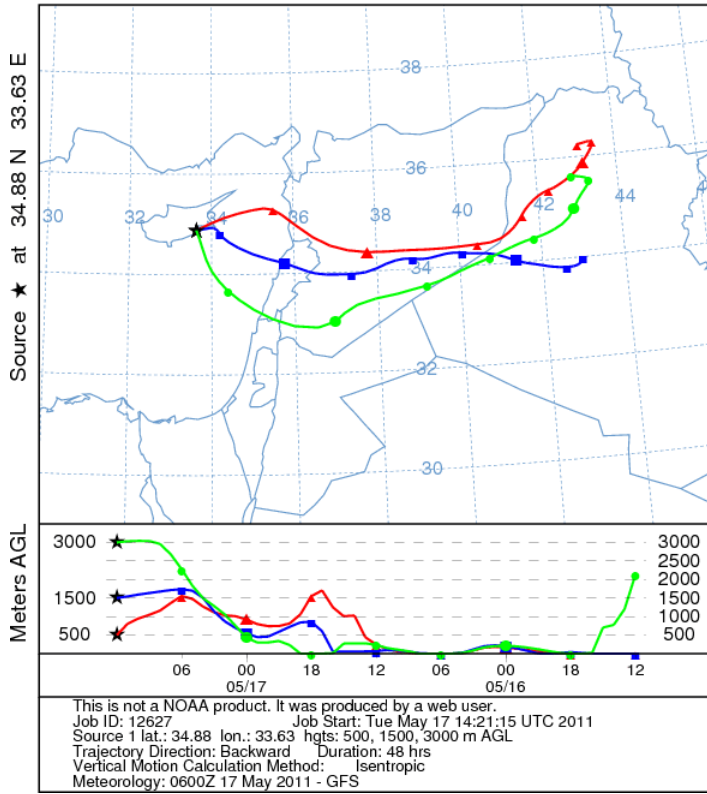


Horizontal visibility. Updated 17 April 2011 12:50 UTC



Dust optical depth forecast for 17 May 2011 12:00 UTC
 BSC-DREAM8b model run 16 May 2011 12:00 UTC

NOAA HYSPLIT MODEL
 Backward trajectories ending at 1200 UTC 17 May 11
 GFSG Meteorological Data



HYSPLIT 48-hour backtrajectories, 17 May 2011 12:00 UTC
 Larnaka, Cyprus (NOAA)